

# NGA GLASS CONFERENCE™ MILWAUKEE

AUGUST 6-8, 2024

**NGA**

NATIONAL GLASS ASSOCIATION with GANA



# How NGA Member Companies Will Benefit from the EPA Grant



**Urmilla Sowell**  
Vice President,  
Advocacy & Technical Services



**Tom Culp**  
Codes Consultant,  
Birch Point Consulting



EPA GRANTS =160M

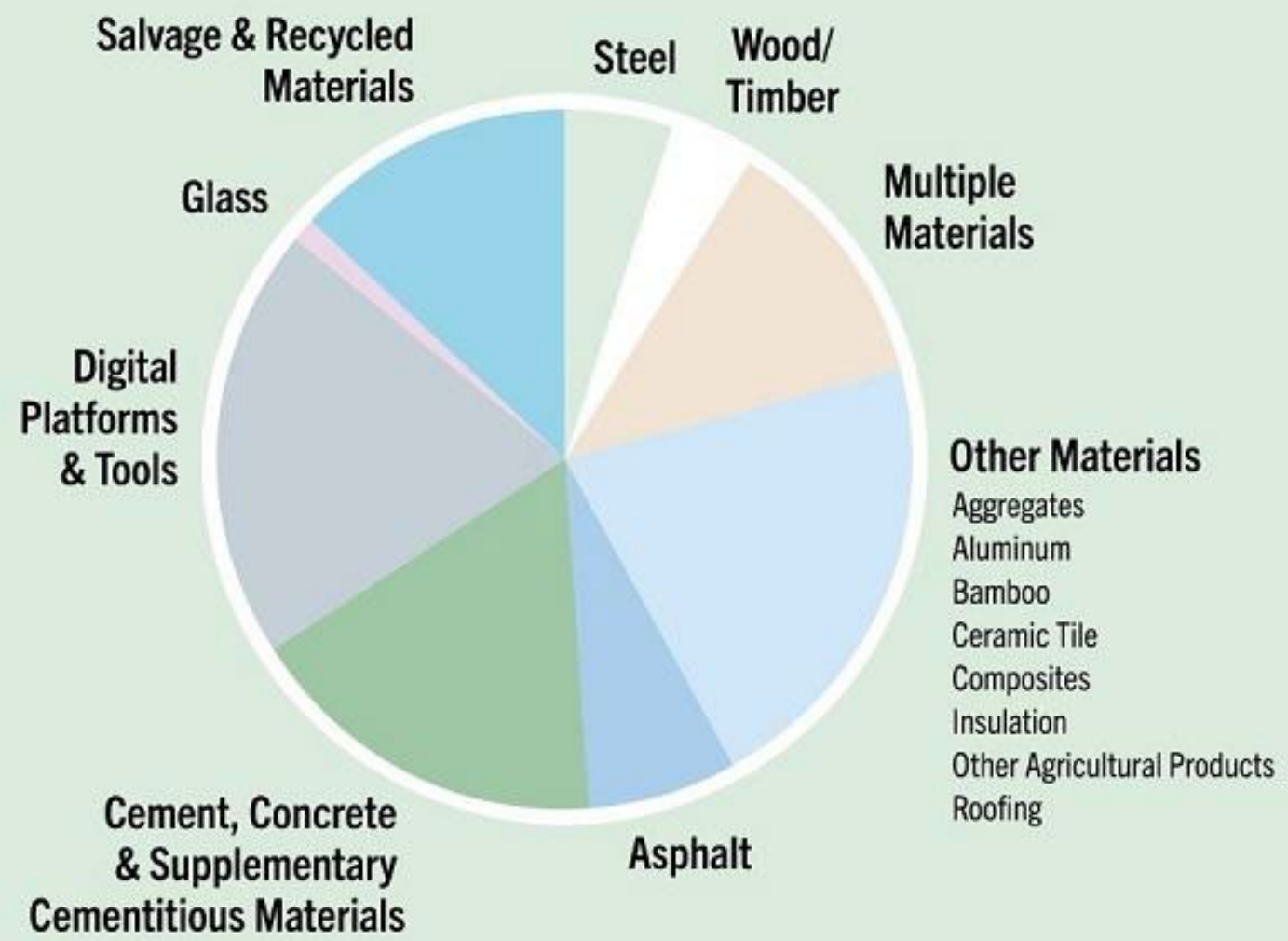
NGA - \$2.1 million

38 grantees selected  
14 material types

NGA is the ONLY glass  
representative

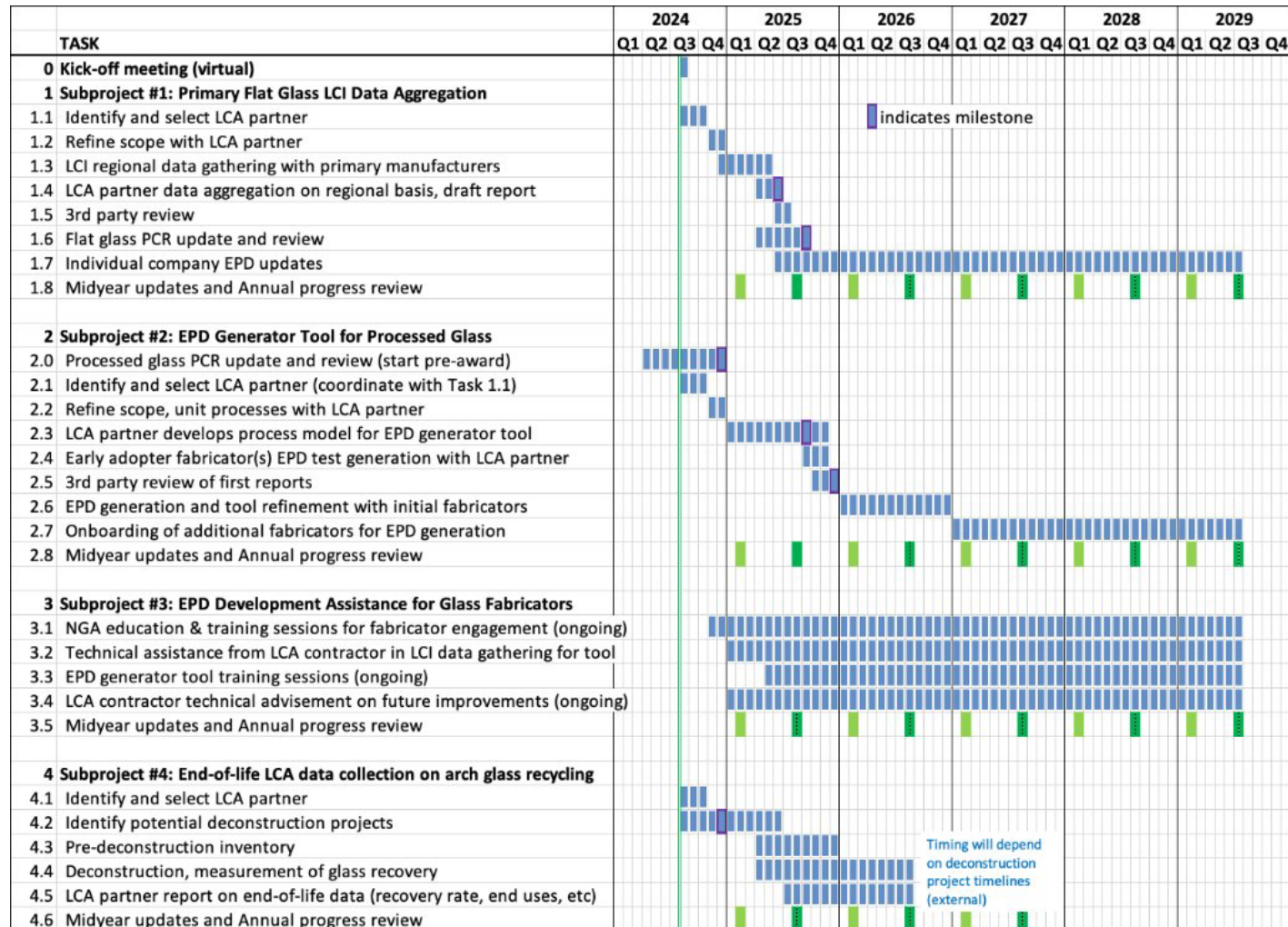
# Material & Product Categories for Grant Selections

Reducing Embodied Greenhouse Gas Emissions  
for Construction Materials\*



\*Selections are contingent upon completion of legal and administrative requirements.

# EPA Grant Details



## NGA grant application:

- “Architectural Glass EPD Development to Reduce Embodied Greenhouse Gas Emissions for Construction Materials and Products”
- **\$2.1M** over 5 years
- Highlights what our industry has already done with primary flat glass EPDs, complexity and diversity of the industry with regards to processed glass products, industry needs and issues.

# Architectural Glass EPD Development Grant Proposal

## Four subprojects:

### 1. **Primary Flat Glass LCI Data Aggregation (\$333k)**

- Provide support to improve granularity of primary flat glass LCI data, as well as PCR update.

### 2. **EPD Generator Tool for Processed Glass (\$379k)**

- Develop robust generator tool capable of producing both LCA data reports and full 3rd-party reviewed EPDs for processed glass products in conformance with ISO standards.

### 3. **EPD Development Assistance for Glass Fabricators (\$1.2M)**

- Provide technical, educational, and financial assistance to glass fabricator members for EPD development.

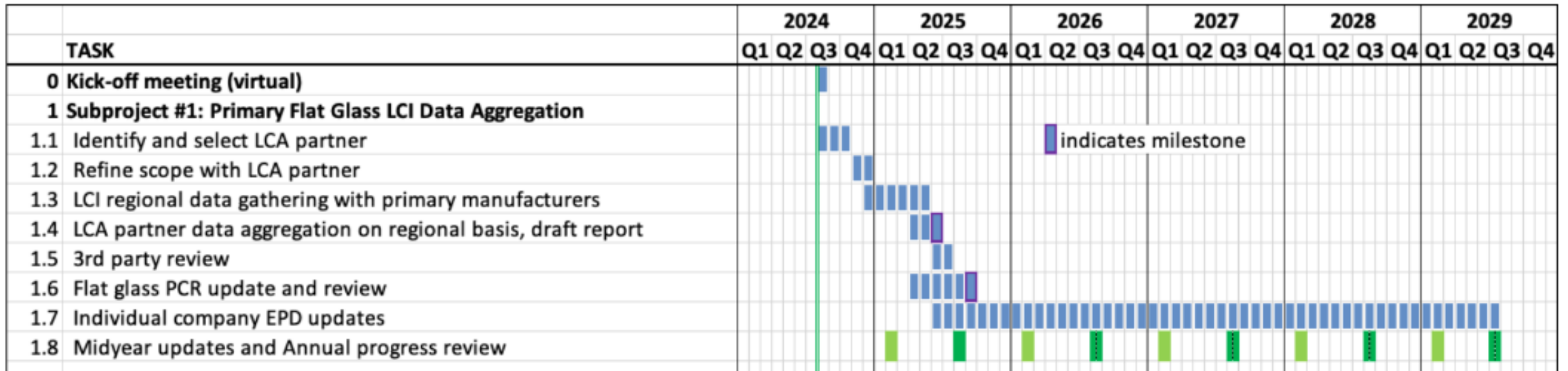
### 4. **End-of-life LCA data collection on architectural glass recycling (\$226k)**

- To improve the understanding about glass end-of-life and quality of LCA part D data, quantify glass recovery rates and track end-use outcomes for recycled glass on 1-3 deconstruction projects.

# EPA Grant Details

## ***Subproject 1. Primary Flat Glass LCI Data Aggregation (\$333k)***

- Provide support to improve granularity of primary flat glass LCI data, as well as PCR update.



# EPA Grant Details

## ***Subproject 1. Primary Flat Glass LCI Data Aggregation (\$333k)***

*Eligible Project Type under Section I.C. and Appendix B of the NOFO:*

- A. Robust Data for EPDs
- B. Robust PCR Standard Development, PCR Update
- C. EPD Development and Verification







# EPA Grant Details

## ***Subproject 2. EPD Generator Tool for Processed Glass (\$379k)***

*Eligible Project Type under Section I.C. and Appendix B of the NOFO:*

B. Robust PCR Standard Development, PCR update

C. Robust Tools & Resources to Support & Incentivize Development and Verification of EPDs

# EPA Grant Details

## ***Subproject 3. EPD Development Assistance for Glass Fabricators (\$1.2M)***

- Provide technical, educational, and financial assistance to glass fabricator members for EPD development.

TASK	2024				2025				2026				2027				2028				2029			
	Q1	Q2	Q3	Q4	Q1	Q2	Q3	Q4	Q1	Q2	Q3	Q4	Q1	Q2	Q3	Q4	Q1	Q2	Q3	Q4	Q1	Q2	Q3	Q4
<b>3 Subproject #3: EPD Development Assistance for Glass Fabricators</b>																								
3.1 NGA education & training sessions for fabricator engagement (ongoing)				■	■	■	■	■	■	■	■	■	■	■	■	■	■	■	■	■	■	■	■	■
3.2 Technical assistance from LCA contractor in LCI data gathering for tool				■	■	■	■	■	■	■	■	■	■	■	■	■	■	■	■	■	■	■	■	■
3.3 EPD generator tool training sessions (ongoing)							■	■	■	■	■	■	■	■	■	■	■	■	■	■	■	■	■	■
3.4 LCA contractor technical advisement on future improvements (ongoing)				■	■	■	■	■	■	■	■	■	■	■	■	■	■	■	■	■	■	■	■	■
3.5 Midyear updates and Annual progress review							■	■			■	■			■	■			■	■			■	■

# EPA Grant Details

## ***Subproject 3. EPD Development Assistance for Glass Fabricators (\$1.2M)***

*Eligible Project Type under Section I.C. and Appendix B of the NOFO:*

D. EPD Development and Verification – Technical assistance and reimbursement for EPD development



# EPA Grant Details

## ***Subproject 4. End-of-life LCA data collection on architectural glass recycling (\$226k)***

- To improve the understanding about glass end-of-life and quality of LCA part D data, quantify glass recovery rates and track end-use

TASK	2024				2025				2026				2027				2028				2029			
	Q1	Q2	Q3	Q4	Q1	Q2	Q3	Q4	Q1	Q2	Q3	Q4	Q1	Q2	Q3	Q4	Q1	Q2	Q3	Q4	Q1	Q2	Q3	Q4
<b>4 Subproject #4: End-of-life LCA data collection on arch glass recycling</b>																								
4.1 Identify and select LCA partner			■	■																				
4.2 Identify potential deconstruction projects			■	■	■	■	■	■																
4.3 Pre-deconstruction inventory						■	■	■	■	■	■	■												
4.4 Deconstruction, measurement of glass recovery							■	■	■	■	■	■	■	■	■	■								
4.5 LCA partner report on end-of-life data (recovery rate, end uses, etc)									■	■	■	■	■	■	■	■								
4.6 Midyear updates and Annual progress review																								

Timing will depend on deconstruction project timelines (external)

# EPA Grant Details

***Subproject 4. End-of-life LCA data collection on architectural glass recycling (\$226k)***

*Eligible Project Type under Section I.C. and Appendix B of the NOFO:*

A. Robust Data for EPDs: salvaged material data, recovery rates for recycling

# EPA Grant Details

